

# access

An **affordable** range of products  
for **more cost-effective** dental practice

## GO-TWO

Constant taper



Continuous **rotation**

NiTi endodontic sequence

- root canal preparation
- enlargement of the irrigation path
- root canal cleaning

STANDARD AND/OR  
DIFFICULT CASES



### ADVANTAGES

#### Efficiency:

- Strong cutting power
- High apical conicity for optimal root canal cleaning
- Easy removal of debris
- Good stability thanks to the multiple edges

#### Safe instrument use:

- Safe ended non-cutting tip

#### Simplicity:

- Easy basic sequence for all root canals

**Can be sterilised at 134 °C**

**Suitable for all endodontic motors  
and contra-angle handpieces with  
continuous rotation**

# GO-TWO

## FEATURES

**21 mm long:** working length 16 mm

**25 mm long:** working length 16 mm and 21 mm

**31 mm long:** working length 21 mm

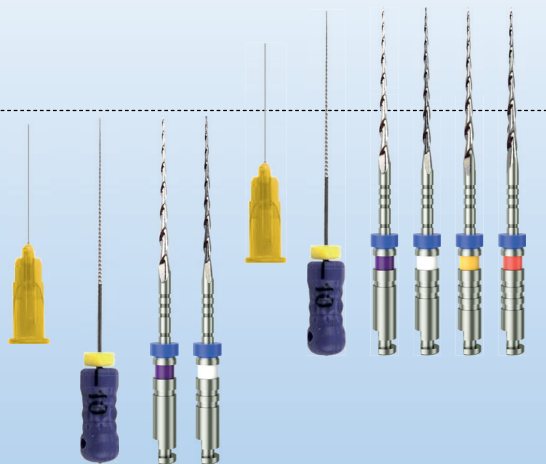
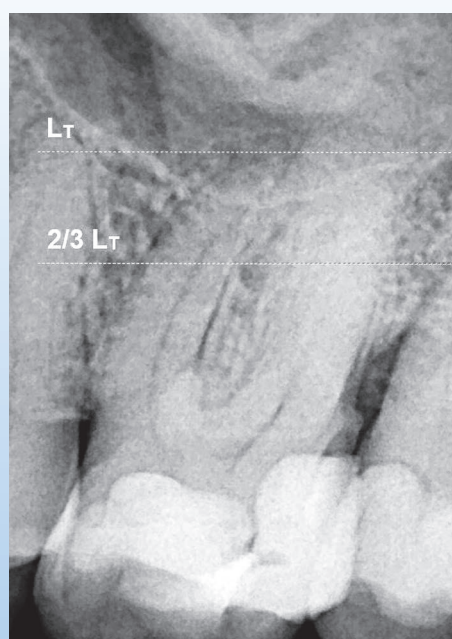
WORKING LENGTH: 16 mm					
TAPER	ISO	SPEED	TORQUE	21 mm	25 mm
Assorted	N°10-25	-	-	3137520	3137521
	N°25-40	-	-	3137522	3137523
4%	● N°10	250	1.2	3137525	3137526
	● N°35	250	1.2	3137527	3137528
	● N°40	250	2	3137529	3137530
5%	○ N°15	250	1.2	3137531	3137532
	● N°30	250	1.2	3137533	3137534
6%	● N°20	250	2	3137535	3137536
	● N°25	250	2	3137537	3137538
	● N°30	250	1.5	3137539	3137540
	● N°35	250	1.5	3137541	3137542
	● N°40	250	2	-	3137543
7%	● N°25	250	2	3137544	3137545

WORKING LENGTH: 21 mm					
TAPER	ISO	SPEED	TORQUE	25 mm	31 mm
Assorted	N°10-25	-	-	3137524	-
4%	● N°10	250	1.2	3137546	3137547
	● N°35	250	1.2	-	3137548
	● N°40	250	2	-	3137549
5%	○ N°15	250	1.2	3137550	3137551
	● N°30	250	1.2	-	3137552
6%	● N°20	250	2	3137553	3137554
	● N°25	250	2	3137555	3137556
	● N°30	250	1.5	-	3137557
	● N°35	250	1.5	-	3137558
	● N°40	250	2	-	3137559

Box of 6 instruments per reference

## PROTOCOL

## BASIC SEQUENCE



### Basic sequence:

10/.04 - 15/.05 - 20/.06 - 25/.06

### Apical enlargement:

30/.05 - 35/.04 - 40/.04

### Retreatment:

15/.05 - 25/.06 - 25/.07