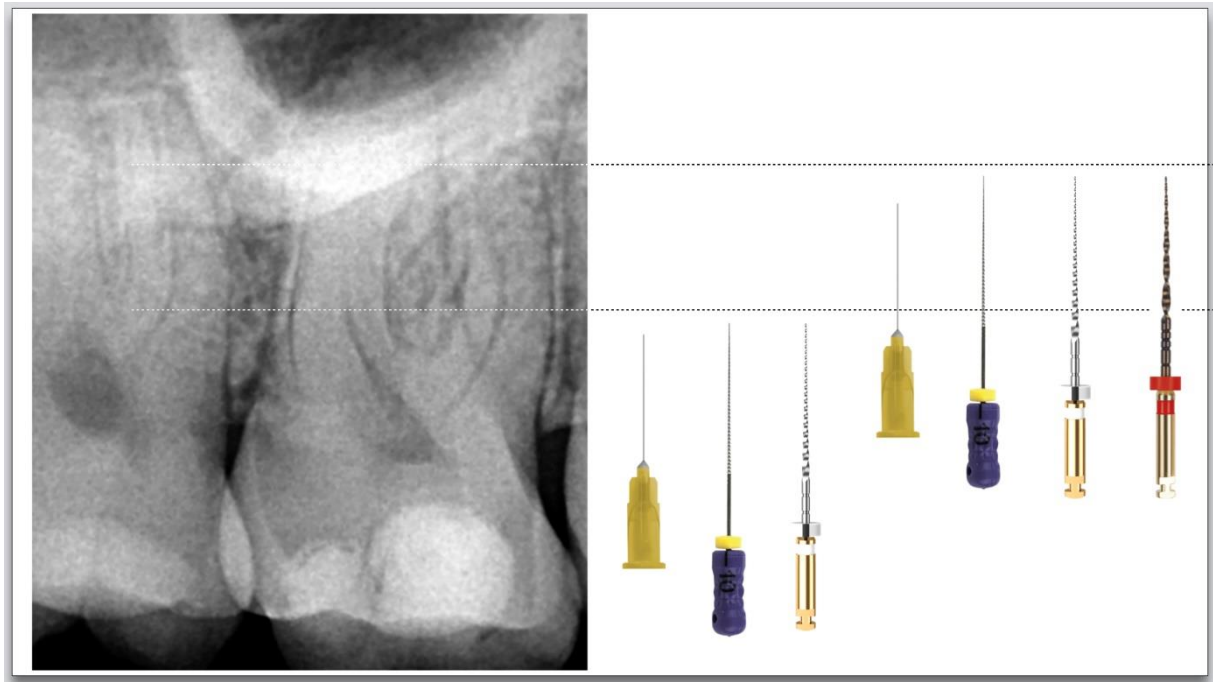
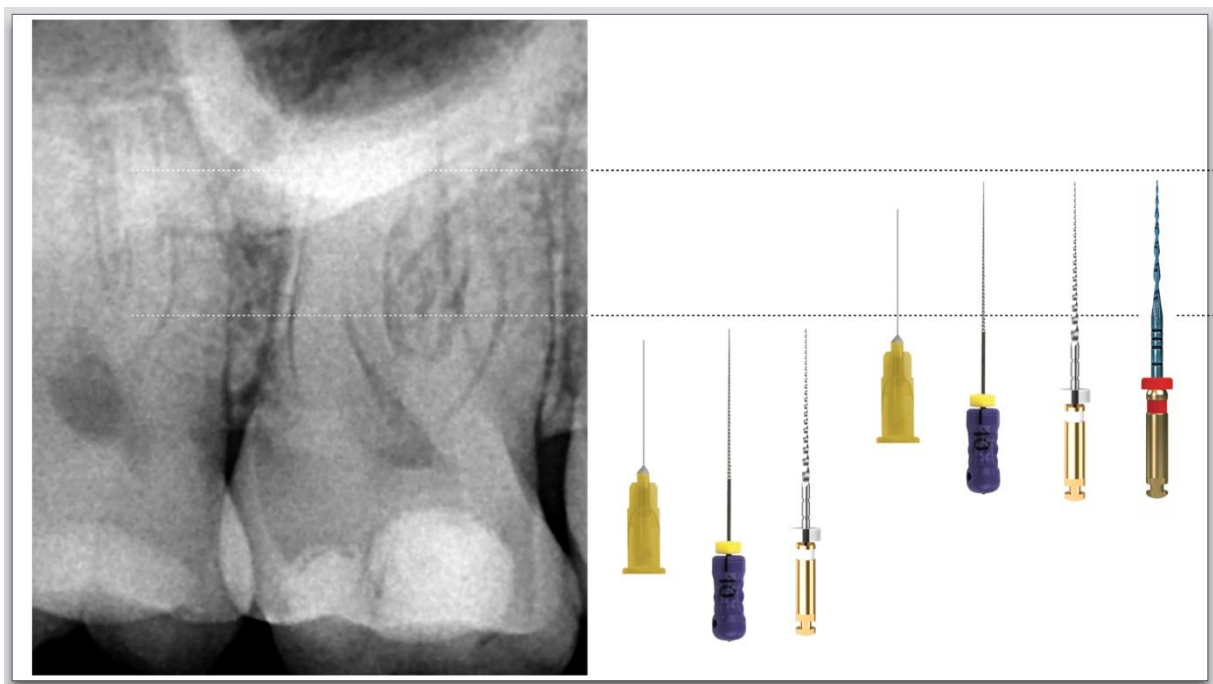


GO-GLIDER protocol

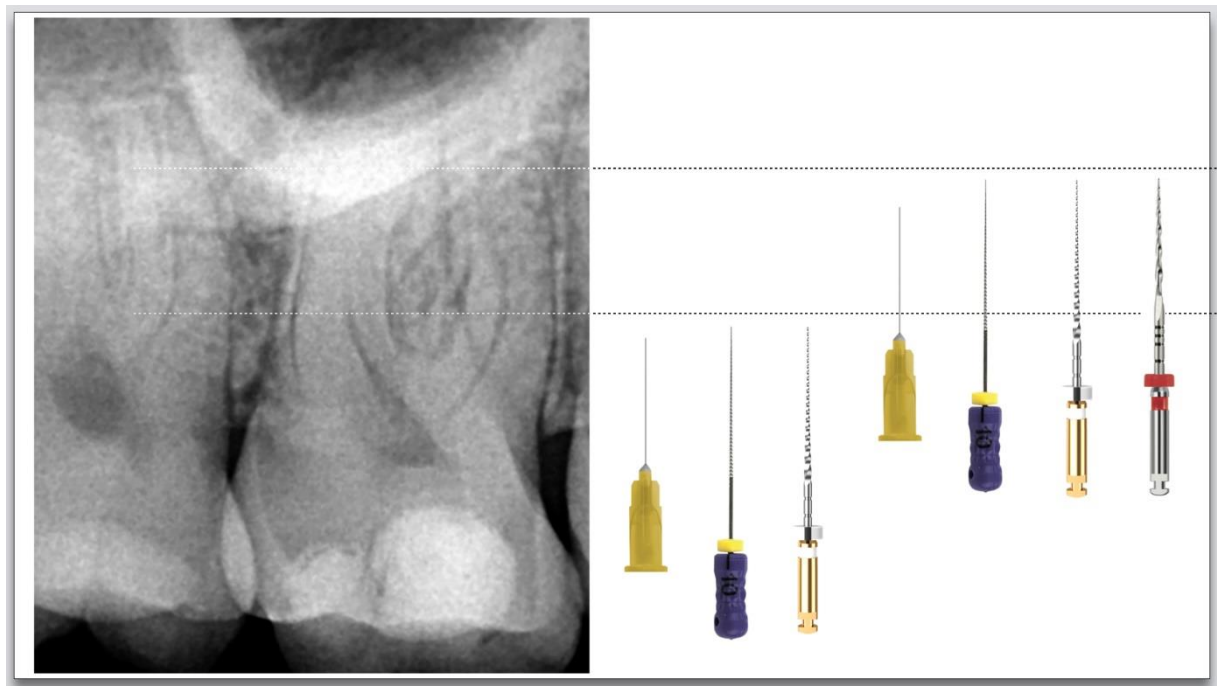
With EASY-FILE FLEX:



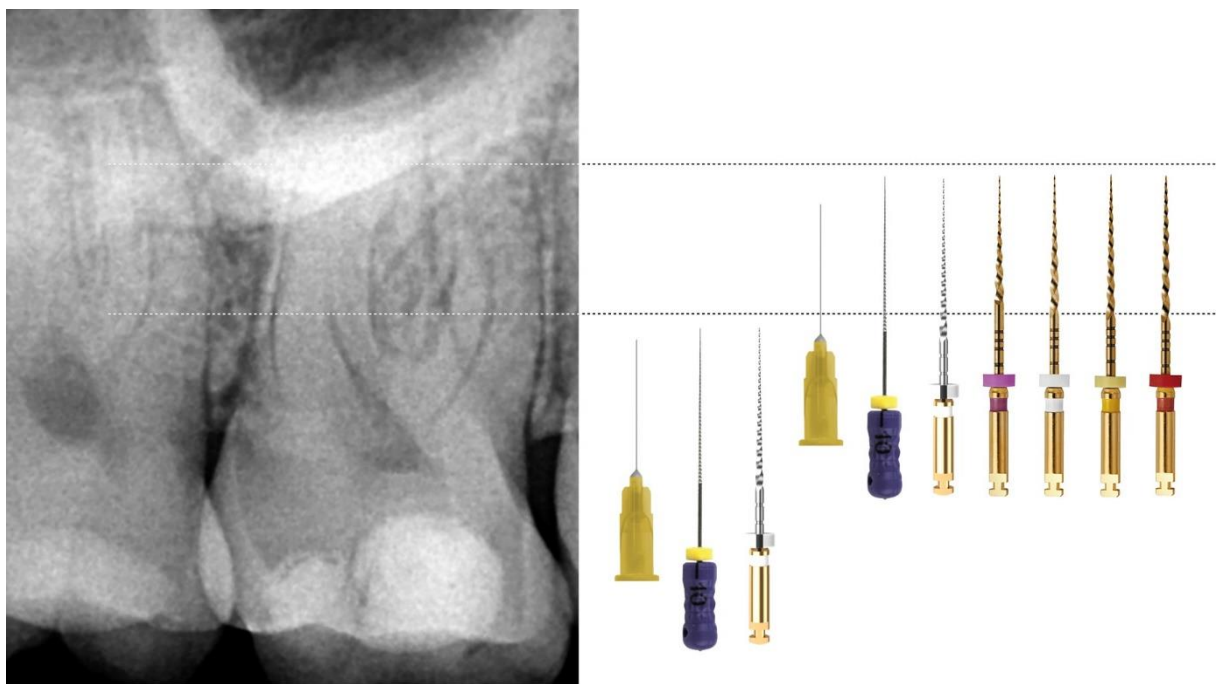
With REVERSO BLUE:



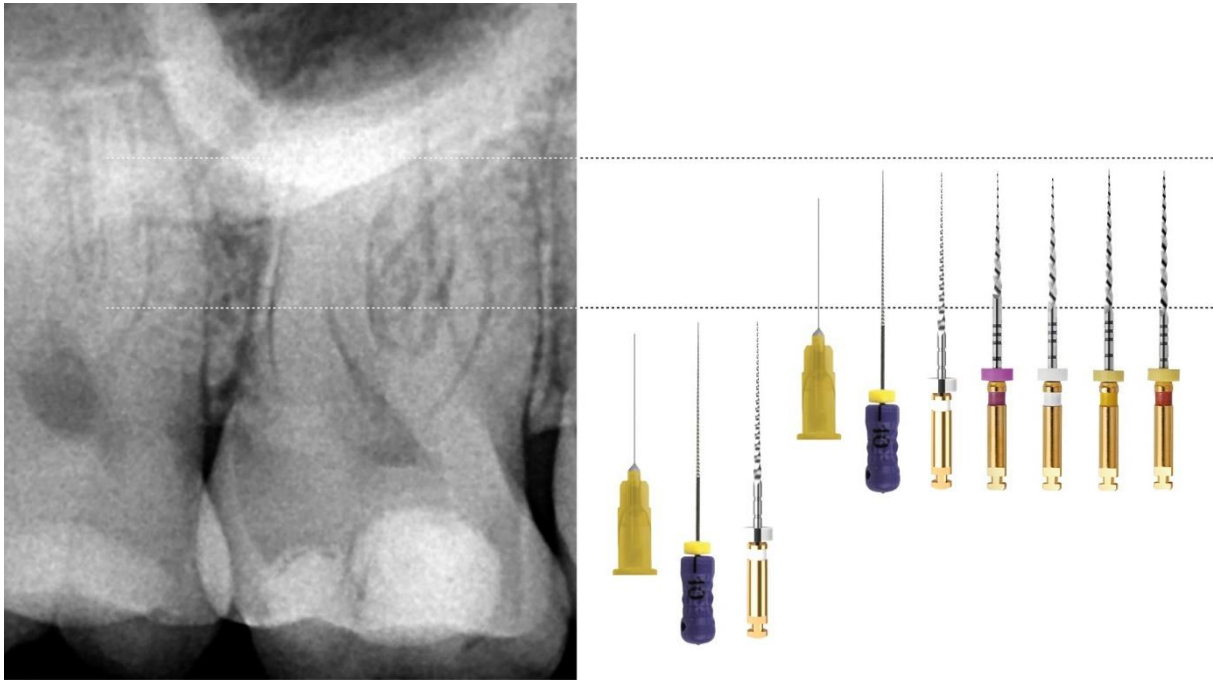
With REVERSO SILVER:



With GO-TAPER FLEX:



With GO-TAPER UNIVERSAL:



After opening the tooth, fill the entire pulp chamber with sodium hypochlorite solution. Penetrate the canals with a #10 file until resistance is felt. Measure this length and prepare the canal to this length using the **GO-GLIDER**. Rinse thoroughly with sodium hypochlorite. Take the #10 file and move it in the canal to the working length. Measure the length and prepare the canal to this length using the **GO-GLIDER**. Rinse and finish the root canal preparation by bringing an **EASY-FILE FLEX** or **REVERSO BLUE** or **REVERSO SILVER** or **GO-TAPER FLEX** or **GO-TAPER UNIVERSAL** to the working length.