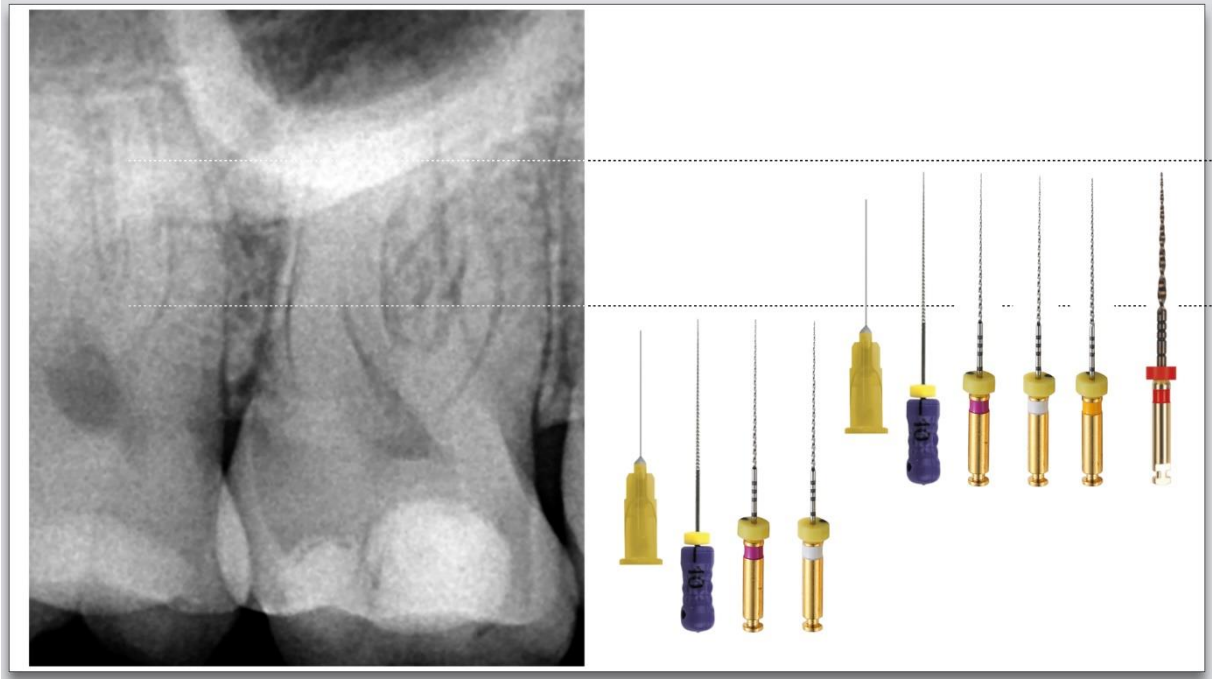
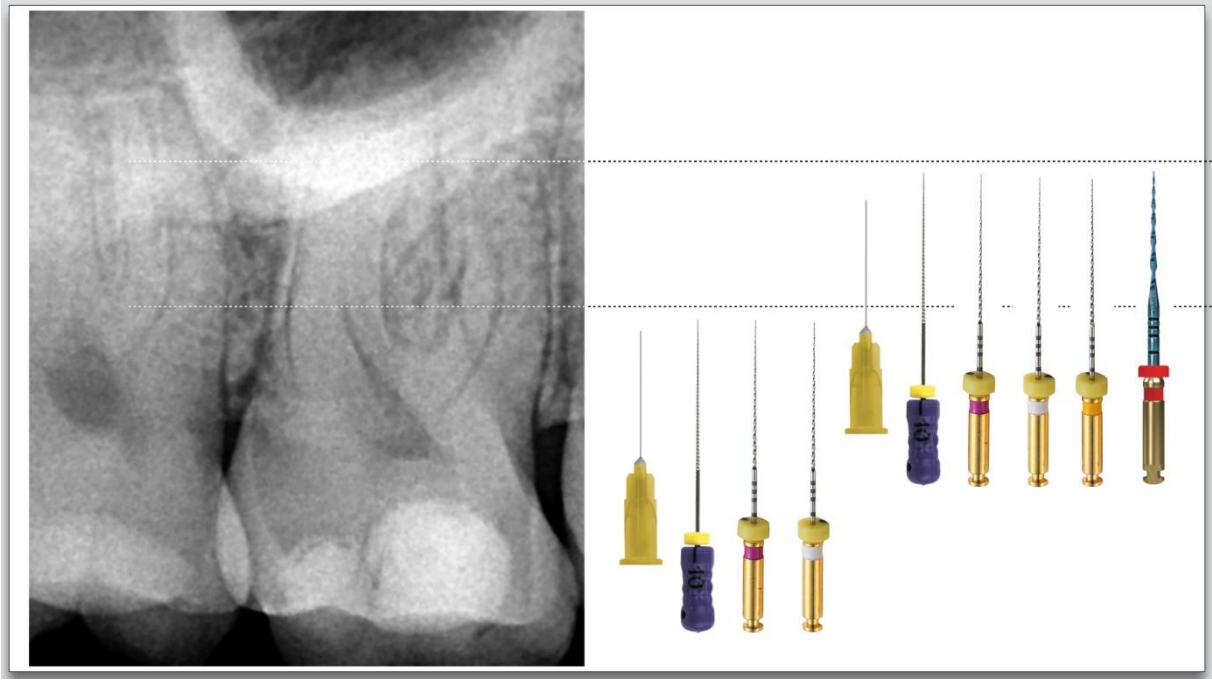


**PREFILE protocol**

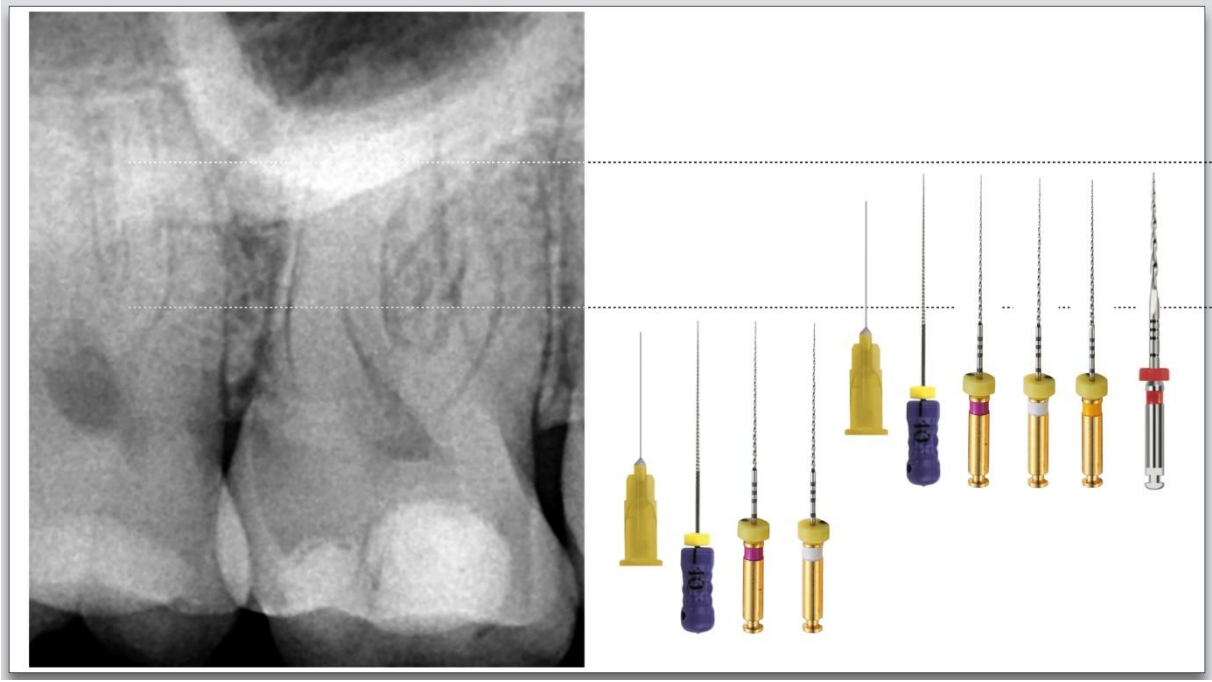
**With EASY-FILE FLEX:**



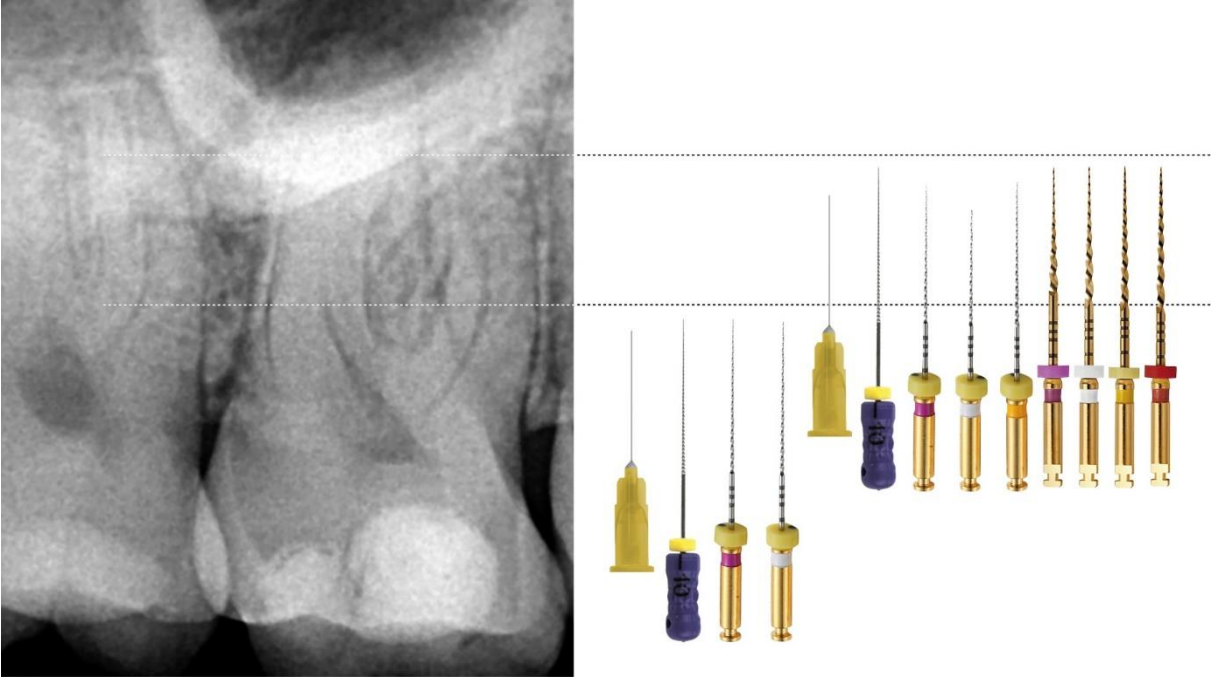
**With REVERSO BLUE:**



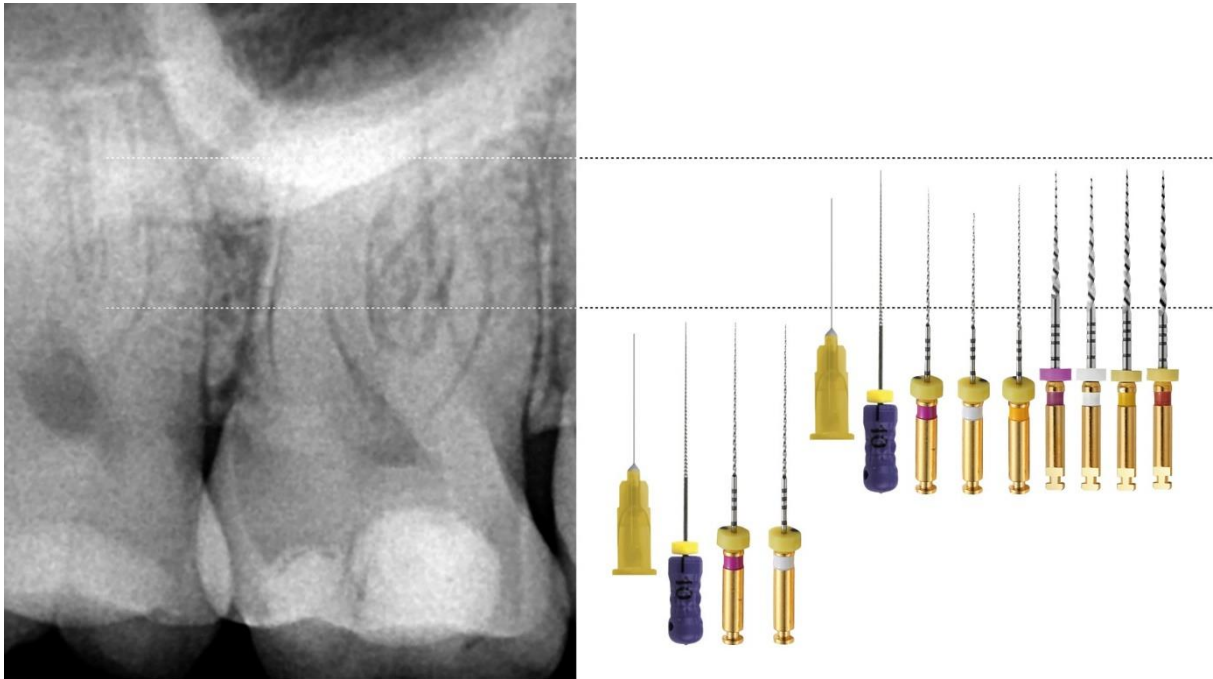
**With REVERSO SILVER:**



**With GO-TAPER FLEX:**



**With GO-TAPER UNIVERSAL:**



After opening the tooth, fill the entire pulp chamber with sodium hypochlorite solution. Penetrate the canals with a #10 file until resistance is felt. Measure this length and prepare the canal to this length using the **PREFILE**. Rinse thoroughly with sodium hypochlorite. Take the #10 file and move it in the canal to the working length. Measure the length and prepare the canal to this length using the **PREFILE**. Rinse and finish the root canal preparation by bringing an **EASY-FILE FLEX** or **REVERSO BLUE** or **REVERSO SILVER** or **GO-TAPER FLEX** or **GO-TAPER UNIVERSAL** to the working length.