

GO-TAPER RETREATMENT protocol (retreatment)



After opening the chamber and locating all canals, fill the access cavity with sodium hypochlorite.



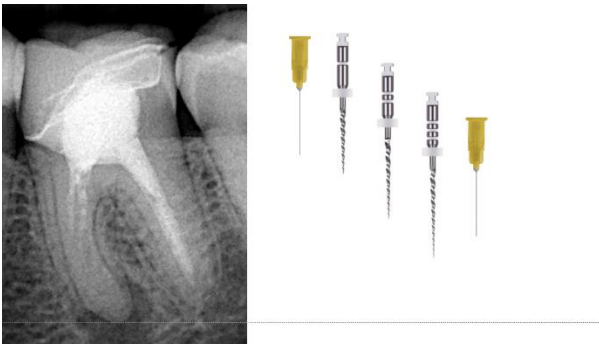
Use the C1 instrument in contact with the gutta percha, applying a slight apical pressure. Allow it to descend a few mm and then move it up brushing the canal walls.



Then take the C2 instrument, and go down into the canal, here again in contact with the gutta percha, and applying a slight apical pressure.



Make then the same movement with the C3 instrument.



Rinse thoroughly.



Repeat the sequence starting with the C2 instrument. The C1 instrument will not be used at this stage. Advance apically into the canal



Advance a little more apically with the C3 instrument and repeat the rinsing steps - C2 - C3 to the working length.