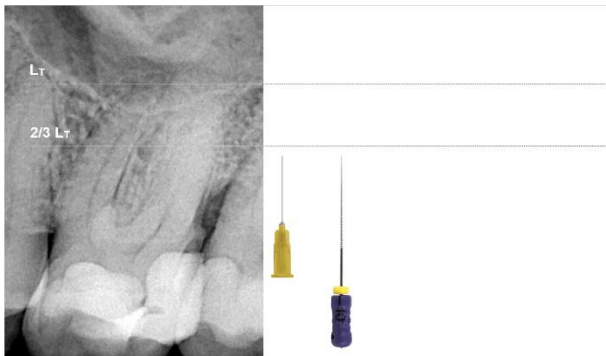


## REVERSO BLUE protocol (treatment)



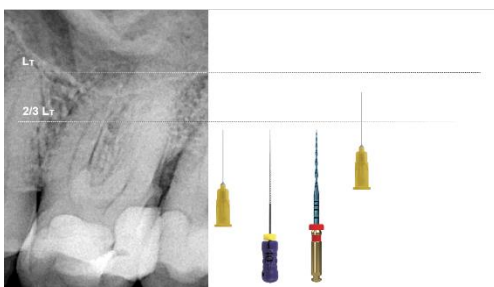
After opening the chamber and locating all canals, fill the access cavity with sodium hypochlorite.



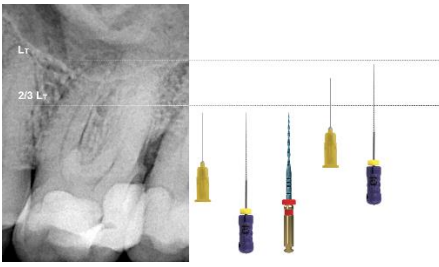
Take a K10 file and insert it passively into the canal, rotating it 1/8th of a turn to the left and right. Move forward without applying pressure and stop when the file stops moving. Note this length.



Take your REVERSO BLUE 25 instrument and prepare the canal to this length. To do this, insert the instrument in motion into the canal and move forward applying a very slight apical pressure. Remain in the canal for 3 seconds, then remove the file and clean the flute. Repeat this action until you have reached the desired length. You have now prepared the coronal 2/3 of the canal.

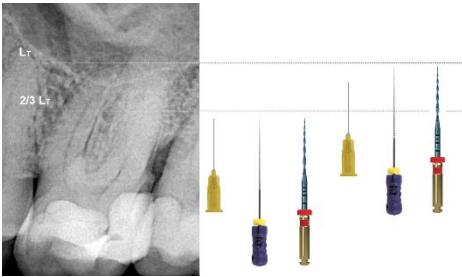


Irrigate abundantly.



Take again your K10 file and move forward passively like before. In many cases, the file will reach the working length passively. Measure this length using an apex locator.

If at this point you cannot reach the working length, do not force it. Remove the K10 file and prepare the canal portion obtained using your REVERSO BLUE 25, then repeat this step.



Prepare the canal to the working length with your REVERSO BLUE 25 making the same movement as before. Bring your REVERSO BLUE 25 file 3 times to the working length.

This completes the mechanical preparation of the tooth.